

# RSF 系列

油箱安装自封型回油过滤器

流量 最大1200 L/min

工作压力 最大16 bar

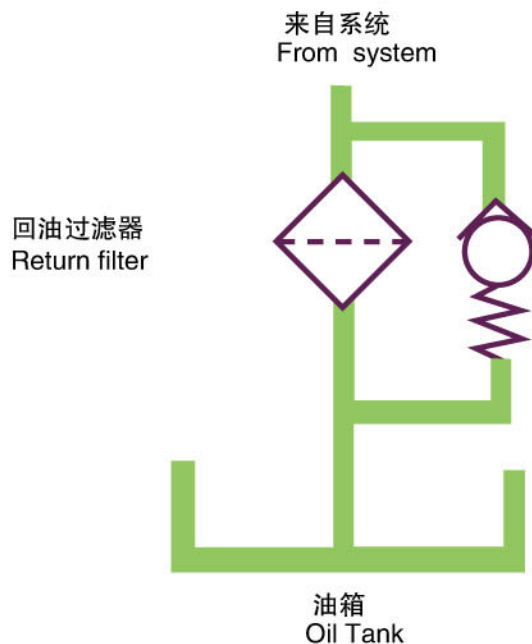
# RSF自封型回油过滤器

## RSF Self-seal Return Filter

### 性能参数 Specifications

结构形式：油箱侧置安装，自封型	Type of construction: Tank side mounted, self-seal
连接形式：BSPP/公制螺纹，SAE法兰	Ports: Threaded BSPP/Metric , SAE flanges
密封材料：丁晴橡胶，氟橡胶	Seal material: NBR,Viton, EPDM on request
工作温度：-30℃~ +120℃	Operating temperature range: -30℃ to +120℃
过滤材料：玻纤、滤纸和金属网	Filtration media: glass fibre, cellulose and wire mesh
滤芯爆破强度：1Bar	Element collapse rating: 1 bar (ISO 2941)
旁通阀开启压力：4bar 其它压力按用户需求	Bypass setting: Opening pressure 4 bar, Other settings on request.
发讯器报警压力： 压力表，压力开关3.5bar(常开)	Indicator options: Vacuum gauge – Vacuum switch 3.5 bar ( NO)
过滤器壳体材料：铝	Filter housing: Aluminium head and cover
工作介质相容性：适用于矿物油，人工合成油 其它介质咨询公司技术部门。	Fluid compatibility: Suitable for mineral oils, synthetic . For use with water, please contact our company.

### 产品液压符号 Hydraulic symbol



### 订货代码 Ordering Code

### 过滤器 The Completed Filter

RSF 0630 F 010 N F90 V

过滤器型号 Filter type \_\_\_\_\_

流量 Flow rate (L/min) \_\_\_\_\_  
 0025, 0040, 0063, 0100, 0160, 0250, 0330,  
 0400,0500, 0630, 0800, 1000, 1200

滤芯材料 Element material \_\_\_\_\_  
 P: 滤纸Cellulose ( $\beta \times 2$ ), F: 玻纤Glass fiber( $\beta \times \geq 200$ ), W: 金属网Wire mesh

过滤精度 Filtration rating( $\mu m$ ) \_\_\_\_\_  
 (F): 002, 005, 010, 020 (P): 010, 025 (W): 040

密封材料 Seals \_\_\_\_\_  
 N:丁晴橡胶 NBR, V: 氟橡胶 Viton

接口形式/尺寸 Port type/Size \_\_\_\_\_

流量 Flow rate	形式/尺寸 Type/Size												
	B(BSP管螺纹 thread)					M(公制螺纹Metric thread)				F(法兰Flange)			
	8	12	16	20	24	18	27	33	42	48	40	63	90
RSF0025	●					●							
RSF0040		●					●						
RSF0063			●					●					
RSF0100				●					●				
RSF0160					●					●	●		
RSF0250					●					●	●		
RSF0330												●	
RSF0400												●	
RSF0500													●
RSF0630													●
RSF0800													●
RSF1000													●
RSF1200													●
B08=G1/2, B12=G3/4, B16=G1, B20=G1-1/4, B24=G1-1/2													
M18=M18x1.5, M27=M27x2, M33=M33x2, M42=M42x2, M48=M48x2													
F40=SAE 1-1/2", F63=SAE 2-1/2", F90=SAE 3-1/2"													

压差发讯器 Indicators \_\_\_\_\_

N: 无No, V: 压力表 Pressure gauge E: 压力开关 Pressure switch 3.5Bar

# RSF自封型回油过滤器

## RSF Self-seal Return Filter

### 滤芯 The replacement element

**RSE 0630 F 010 N**

滤芯型号 Element type \_\_\_\_\_

流量 Flow Rate (L/min) \_\_\_\_\_  
0025, 0040, 0063, 0100, 0160, 0250, 0330, 0400, 0500, 0630, 0800, 1000, 1200

滤芯材料 Element material \_\_\_\_\_  
P: 滤纸 Celulose ( $\beta x=2$ ), F: 玻纤 Glass fiber( $\beta x \geq 200$ ), W: 金属网 Wire mesh

过滤精度 Filtration rating( $\mu m$ ) \_\_\_\_\_  
(F): 002, 005, 010, 020 (P): 010, 025 (W): 040

密封材料 Seals \_\_\_\_\_  
N: 丁晴橡胶 NBR, V: 氟橡胶 Viton

### 过滤器主要性能参数 Filter Specification

过滤器 Filter	接口 Ports	滤芯 Element	重量 Weight(Kg)
RSF0025	G <sup>1/2</sup> , M18x1.5	RSE0025...	0.85
RSF0040	G <sup>3/4</sup> , M27x2	RSE0040...	0.9
RSF0063	G1, M33x2	RSE0063...	1.5
RSF0100	G1- <sup>1/4</sup> , M42x2	RSE0100...	1.7
RSF0160	G1- <sup>1/2</sup> , M48x2	RSE0160...	2.7
RSF0250	SAE 1- <sup>1/2</sup> "	RSE0250...	4.35
RSF0330	SAE 2- <sup>1/2</sup> "	RSE0330...	5.77
RSF0400		RSE0400...	6.15
RSF0500	SAE 3- <sup>1/2</sup> "	RSE0500...	7.5
RSF0630		RSE0630...	8.2
RSF0800		RSE0800...	8.9
RSF1000		RSE1000...	9.96
RSF1200		RSE1200...	10.5

### 压降曲线 Pressure Drop Curves

过滤器的压降是壳体的压降加上清洁滤芯的压降。推荐回油过滤器初始压降不大于0.5bar。

如果所使用的工作介质粘度不是32cSt, 实际压降计算如下:

$$\Delta p = (\Delta p_{32} \times \text{工作介质粘度}) / 32\text{cSt}$$

过滤器压降数据是基于工作介质的动力粘度32cSt、密度0.87得到。

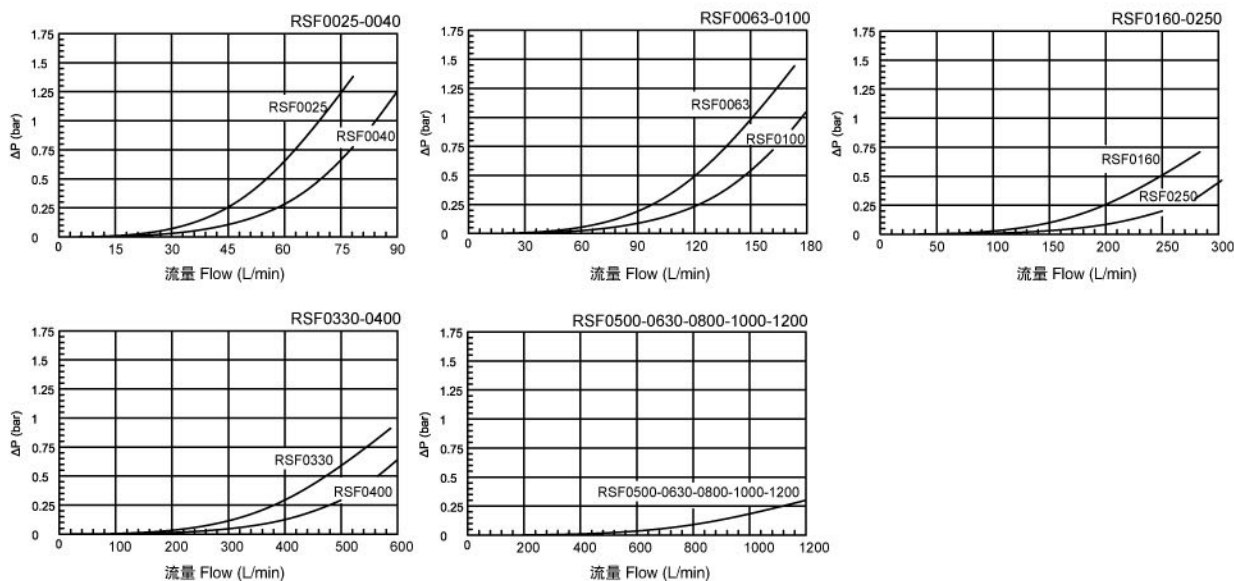
The "Assembly Pressure Drop ( $\Delta P$ ) is obtained by adding the pressure drop values of the filter housing and of the clean filter element and the recommended level of the initial pressure drop for return filter is less than 0.5 bar.

If the medium used has a viscosity different from 32cSt, pressure drop over the filter can be estimated as follows:

$$\Delta p = (\Delta p_{32} \times \text{viscosity of medium used}) / 32\text{cSt}$$

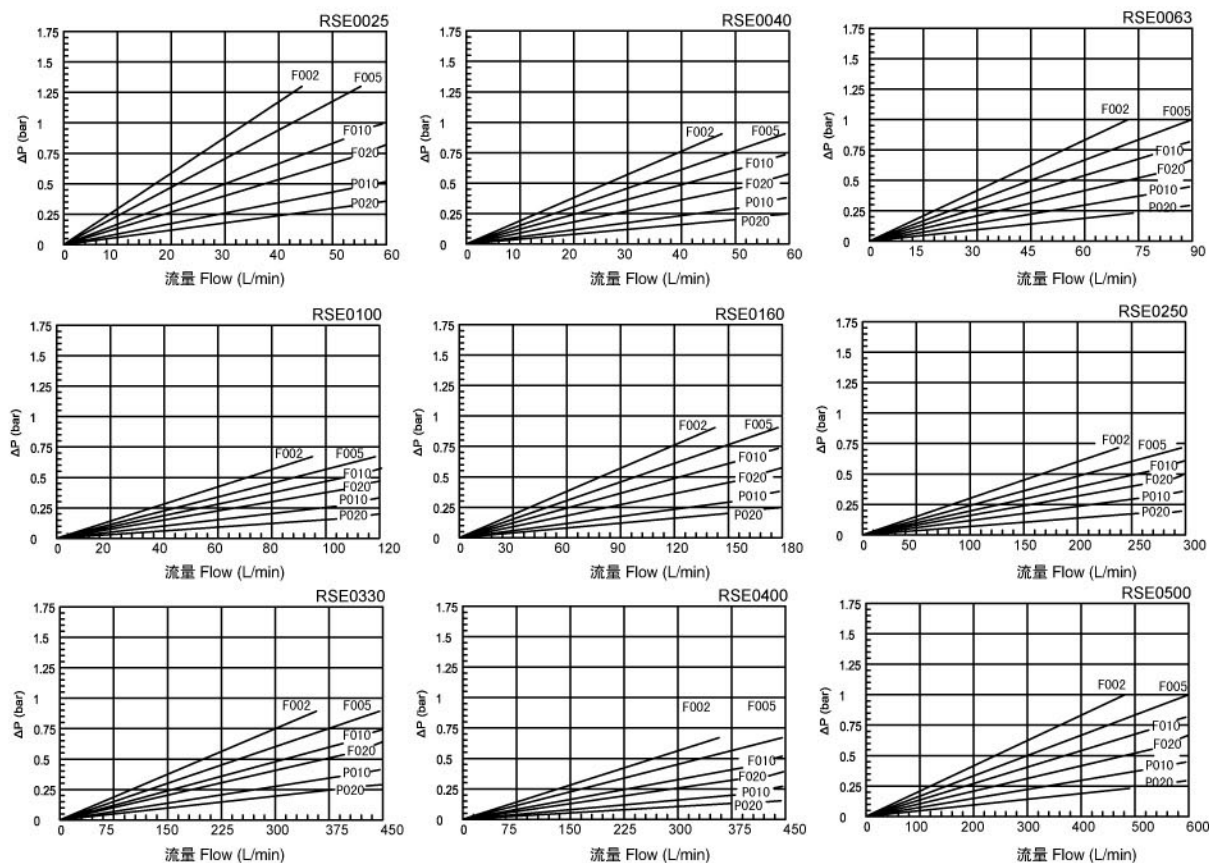
Filter pressure drop based on 32cSt fluid viscosity and 0.87 density.

### 壳体压降 Filter Housing Pressure Drop



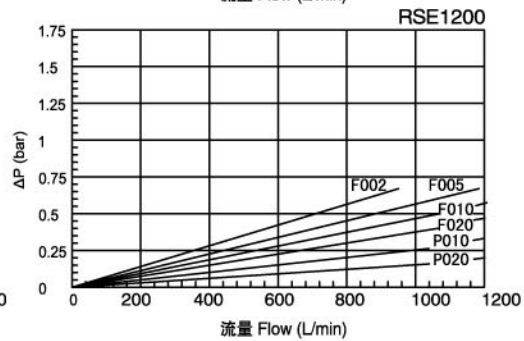
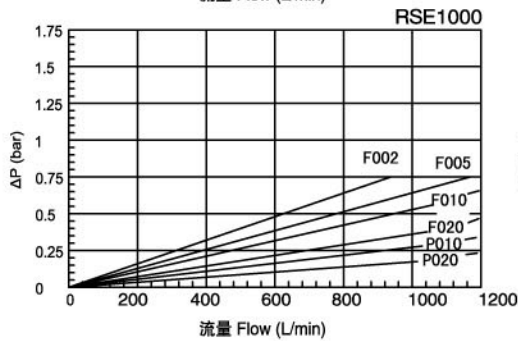
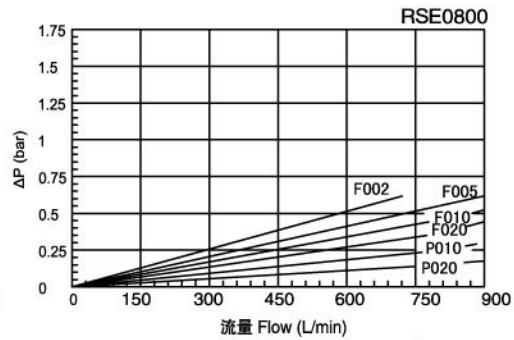
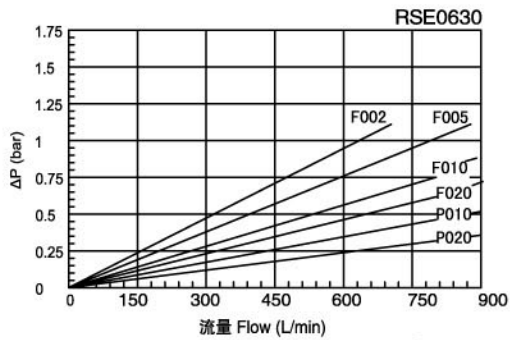
### 玻纤和滤纸滤芯初始压降

#### Clean Element Pressure Drop With Media F&P



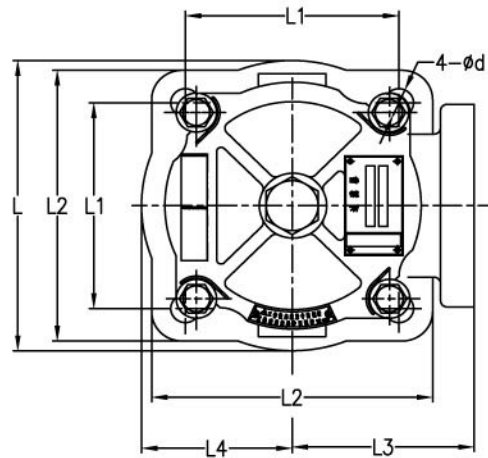
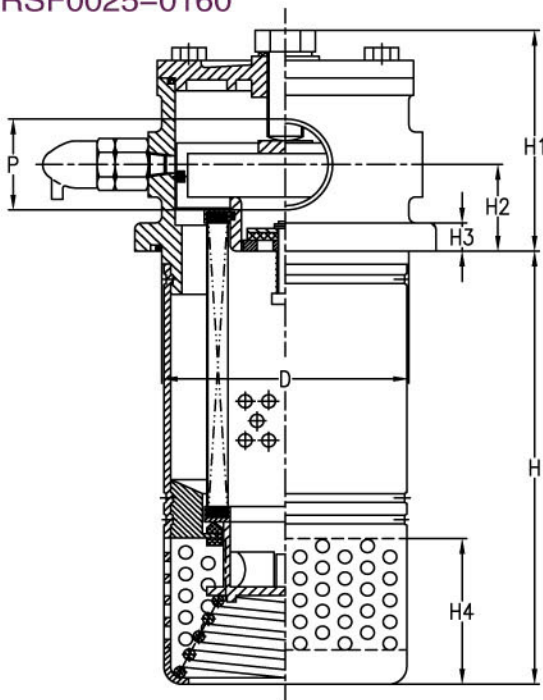
# RSF自封型回油过滤器

## RSF Self-seal Return Filter



### 外形安装尺寸 Dimensions

RSF0025-0160



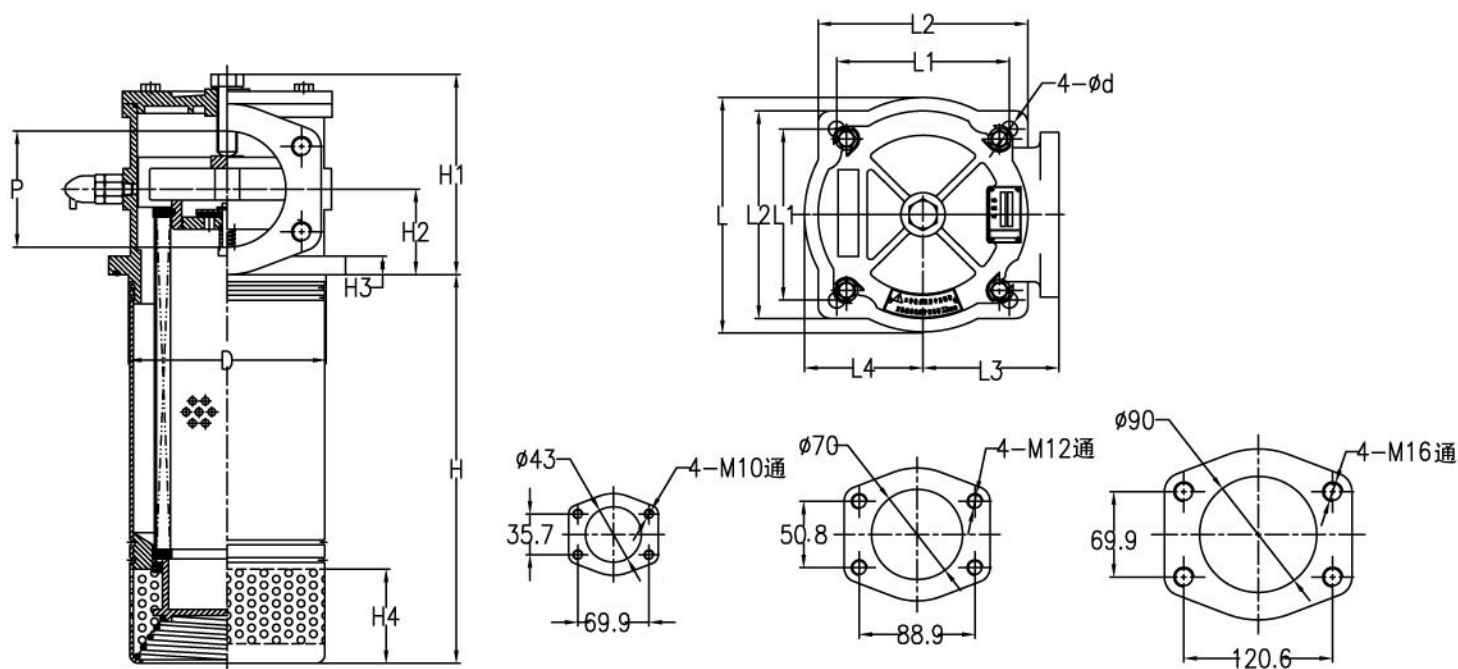
型号 Type	P	D	H	H1	H2	H3	H4	L	L1	L2	L3	L4	d
RSF0025	G <sup>1</sup> / <sub>2</sub> , M18x1.5	ø75	127	70	25	10	37	90	70	90	53	45	ø9
RSF0040	G <sup>3</sup> / <sub>4</sub> , M27x2		158										
RSF0063	G1, M33x2	ø95	185	90	33	12	50	120	85	110	60	60	
RSF0100	G1- <sup>1</sup> / <sub>4</sub> , M42x2		245										

# RSF自封型回油过滤器

## RSF Self-seal Return Filter

### 外形安装尺寸 Dimensions

RSF0250-1200



法兰 Flange SAE 1-1/2"

法兰 Flange SAE 2-1/2"

法兰 Flange SAE 3-1/2"

型号 Type	P	D	H	H1	H2	H3	H4	L	L1	L2	L3	L4	d
RSF0160	G1-1/2, M48x2	ø110	320	100	40	15	67	134	90	125	85	77	ø13
RSF0250	SAE 1-1/2 "		420	120		13	60		95			67	
RSF0330	SAE 2-1/2 "	ø130	345	127	55	70	159	110	140	90	79		
RSF0400			463										
RSF0500	SAE 3-1/2 "	ø160	456	164	70	15	77	192	140	170	110	96	
RSF0630			484										
RSF0800			594										
RSF1000			774										
RSF1200			974										